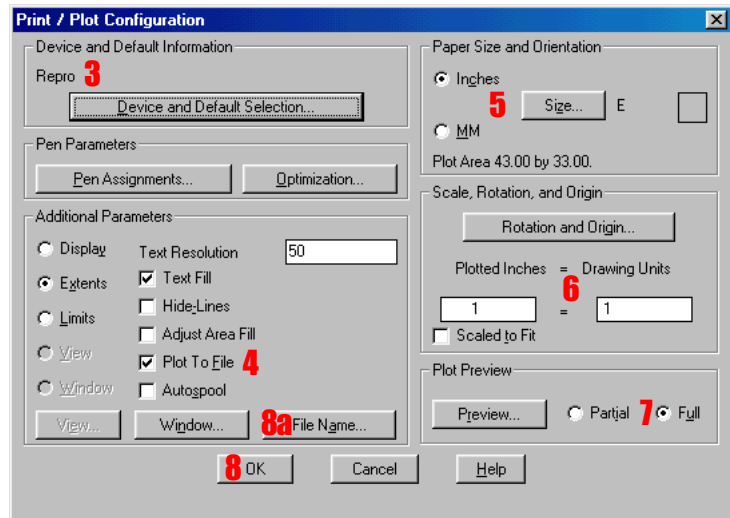


## Creating the plot file

1. Open the drawing file in AutoCAD
2. Type PLOT
3. Go to devices and highlight the desired driver (Repro for B&W, Repro Color for Color - see driver setup sheets for details), then click OK



4. Make sure plot to file is checked on (lower left corner or plot window)
5. Go to Sheet size to set up Final Plot size
6. Go to scale to set required image scale
7. Go to Preview and select FULL to double check that the image is entirely on the page, appears to be the expected size and that all desired elements are visible. If anything looks incorrect here, it will be incorrect on the plot.
8. Go to OK to begin writing the file. The plot file will have the same name as the drawing file with the .PLT extension and be located in the same directory as the drawing file unless otherwise specified (8a) before clicking OK.
9. Copy the .PLT file to disk for plotting.